



Distributor's Feeder Tube

January 2006

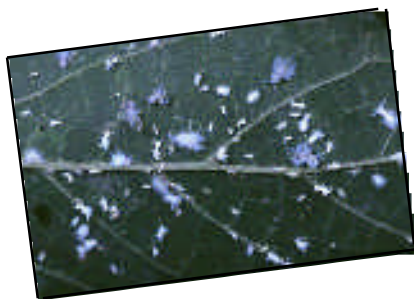
POINTS OF INTEREST!!

- **PLEASE NOTE:** The Home Study Course will now be known as the "MAUGET SELF STUDY COURSE".
- Anyone interested in promoting upcoming seminars on the Mauget website need to get their dates and cities to Arnold Farran @ (877) 873-3779.
- Please make sure that anyone taking the Mauget Applicator's Exam prints clearly and legibly in order to receive their certificate in a timely manner.

What is the MANOMETER?

No it's not to measure a mans sex appeal! It actually is a tool which very well may make our applicators life a little easier. The manometer measures internal pressure within a tree's vascular system and possibly can tell us how well or if a tree's vascular system is functioning. Field tests are currently under way to determine if this tool will be of value to our applicators. Look for more information at our website or through our distributors.

Hackberry Woolly Aphid: Celebrity Pest Spotlight



Having been discovered in California in 2002, the Hackberry Woolly Aphid has been infesting hackberries, and especially Chinese Hackberries. This aphid was accidentally introduced in the U.S. sometime in the late 1990's. This pest has also been found from Florida to Texas. The celebrity pest is especially pesky because of the copious amount of honeydew excretions. This of course creates a sticky mess and promotes the growth of sooty mold.

To ensure the identity of your celebrity pest, check leaves for waxy masses and insects to be sure your guest is the reason behind the "mess". Citricola scale produces honeydew also, but is not a threat to the plants health.



Calendar of Events:

February 6-11, 2006

Golf Industry Show
Atlanta, GA

February 15-16, 2006

Landscape Industry Show
Los Angeles, CA

February 21, 2006

Target Seminar
Visalia, CA

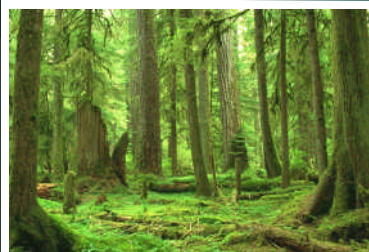
February 28, 2006

Target Seminar
Anaheim, CA

Important Billing Information:

As some of you may already know, we at Mauget have a NEW processing procedure for receiving your payments. As of 1/1/06, JJM Distributors will be required to send ALL payments to:

J. J. Mauget Co.
P.O. Box 51049
Los Angeles, CA 90051-5349



Suburbia is where the developer bulldozes the trees, then names the streets after them.

-Bill Vaughn

RESEARCH & DEVELOPMENT

Mauget Research: Arnold Farran, Dr. Terry Tattar PhD.,
Don Diamond, and Charlie Dodds

After years of research and development the J.J. Mauget Company has submitted to the Federal EPA two new pesticides for registration. The first is a new insecticide called Abacide II which has double the active ingredient of Abacide. The next is a new fungicide called Tebuject 16 which has quadruple the active ingredient of Tebuject. In field trials both of these new formulations have demonstrated superior performance over their predecessor products. We look forward to seeing their introductions sometime in the Spring/Summer of 2006.

PRODUCTION NEWS:

By Allan Dodds

Mauget will be introducing their latest innovation to the Gen II delivery system with material in the 4ml + products packaged in late February. The 3 step locking system will provide a superior locking design when compressing capsules with these higher mil-lage products. In October 2005 it was tested by the U.S.D.A at their testing lab and tested side by side with Gen I, Gen II modified and Gen II 3 step capsules and the 3 step out performed both other capsules. For more information contact your distributor or visit our website www.mauget.com.

Exciting stuff for 2006...

Mauget's Marketing Team continues to grow at a brisk rate. The south east has been bolstered with the addition of four new distributors: Corbin Landscape Supply in Greenville, SC, Landscape Supply Inc. with 3 offices in Virginia, Mark Steinberg covering the Tampa Bay area, and Turf Supply of the Ozarks in Springfield, MO. We have also set up our first distributor in Guam : Landscape Management Systems (LMS) in Tumon, Guam.

2006 will be an exciting year for Mauget with the introduction of the latest Gen II capsule featuring a positive 3 step locking system, a new Abamectin formulation, ABACIDE II being introduced in late Spring and Tebuject 16 ,making its appearance mid year. Look for these new products at your local distributors.

Favorable pricing brought on by off patent formulations will be passed on to our customers. IMICIDE HP is our first product to see a price reduction and even though plastics have taken a sharp increases we were able to hold the line on Imicide and Abacide products.

Ask Ann: By Ann Hope



Even if you have applied Mauget products in the past, I feel it's necessary to discuss the proper personal protective equipment required to apply the product. Safety glasses are a must! While Mauget is a closed system, safety glasses will protect you in the event you come in contact the material in the capsules. Long sleeves are a must as well! Again, while it's a closed system, you may come in contact with material in the capsules. Sometimes we forget or get lazy. These requirements are for your protection.

Applying Issues:

Remember - before making an application the soil temperature should be at least 45 degree. The trees need to be transpiring/ translocating in order for the uptake of material. The trees should also be properly irrigated prior to application.

Ann Hope is Mauget's Technical Support Representative for Southern California. She has nine years of industry experience in a variety of areas including weed control, ornamental trees and rodent control. Please email any questions to Ann at: ann@mauget.com

Trees... from the Moon

They have been to space and back and virtually all of them lived to tell the tale. There are more of them than there are astronauts and they are found all over the planet.

"They" are Moon Trees grown from seeds which journeyed to the Moon and back on board Apollo 14 in 1971. These seeds were germinated and planted as part of the US bicentennial celebrations in 1976.

In that year, when the Moon Trees were five years old, requests came from all over for saplings.

With demand high, second-generation saplings were created, the offspring of a Moon Tree and an earthly specimen.

They went all over Europe - France, Germany, Spain. The British Isles got half a dozen.

These trees are a connection to history and they have flourished through the decades.



Mauget Contact Information:

5435 Peck Road
Arcadia, CA 91006

(800) 873-3779
(626) 444-1057
Fax (626) 444-7414

mauget@mauget.com

Nate Dodds	Ext. 101
Kellie Dodds	Ext. 105
Charlie Dodds	Ext. 103
Allan Dodds	Ext. 106
Ann Hope	Ext. 155
Javier Diaz	Ext. 104
Stephanie Monroe	Ext. 100
Katrina Delgado	Ext. 102
Mary Peters	Ext. 115

Please contact Mary Peters—
Newsletter Editor
(mary@mauget.com) with suggestions
or topics you would like to see in
future issues of your Distributors
Feeder Tube.

The Distributor's Feeder Tube is a
quarterly newsletter published by the
J.J. Mauget Co. It's goal is to provide
information to our distributorship in
what is new and what is "news" with
Mauget and the tree care industry.

Interesting tree fact...

The most dangerous tree is the Manchineel Tree, Hippomane manciella, of the Caribbean coast and the Florida Everglades. This species has had an evil reputation since the Spanish explorers first feared it in the 16th century. The entire tree exudes an extremely poisonous and caustic sap that was once used as arrow poison. Contact with the skin causes an eruption of blisters, contact to the eye can blind a person, and one bite of the fruit causes blistering and severe pain.



Happy
New
Year!!!

From **Mauget**