

The Feeder Tube

by **Mauget**

SEPTEMBER 2009

THE MAUGET FAMILY GROWS!!!

Mauget is thrilled to announce the addition of two new members to its family!



Saskia Van der Veen joined our administrative group on April 28, 2009 and will be filling a vital role in handling registration of our products, shipping, certified applicators certificates as well as many other duties. Saskia will be available at extension 102.



We are also proud to announce the birth of **Sadie Lenore-Kimberly**

Peters to our very own Feeder Tube editor and Marketing Manager Mary Peters and her husband Ken on June 1, 2009. Sadie weighed in at 7 lbs. 3 oz. and has happily taken her place as the official mascot of the J. J. Mauget Co.

WARNING!!! **A KILLER MAY BE LIVING IN YOUR NEIGHBORHOOD!!**

This just is...

A number of dangerous killers have been taking the lives of trees throughout the United States! If you should spot one of these dreaded assassins, you are advised to contact your local Mauget distributor!!

www.mauget.com



Hemlock Woolly Adelgid



Emerald Ash Borer



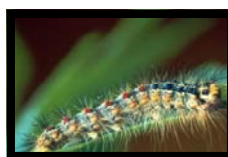
Winter Moth



Eastern Tent Caterpillar



Flatheaded Borer



Gypsy Moth



Asian Longhorned Beetle



Bagworm



Japanese Beetle

CALENDAR OF EVENTS:

Memorial Day

September 7, 2009
MAUGET ARCADIA
OFFICE CLOSED

Target Seminar

October 22, 2009
Ontario, CA

GIE + Expo

October 29 - 31, 2009
BOOTH # 2045
Louisville, KY

TCI Expo

November 5 - 7, 2009
BOOTH # 603
Baltimore, MD

Thanksgiving

November 26 & 27, 2009
MAUGET ARCADIA
OFFICE CLOSED

Golf Industry Show

February 10 - 11, 2010
San Diego, CA

APPLICATORS DATABASE

The influence of the "green movement" continues to increase the public's awareness of the Mauget system of pesticide application. This has been made evident by more homeowners finding the Mauget website and calling for recommendations on applicators for their respective regions of the US.

While still a work in progress, our Applicator's Database is acquiring numerous names of qualified applicators. **Please register with us soon as a Mauget Applicator at www.mauget.com!**



UPDATES FROM THE FIELD...

THE WEST:

Marianne Waindle - Western Sales Representative

Foliar pests such as *Myoporum* thrips, *Klambothrips myopori*, in both northern and southern coastal California communities as well as the ash leafcurl aphid, *Prociphilus fraxinifolii*, in Montana, Colorado, and Kansas are heavy this year. Both insects cause distortion, curling, and eventual death of the new foliage so that trees become disfigured. Sequential damage can cause death in small trees. Applications of Abacide 2 for myoporum thrips and Imicide for the ash leafcurl aphid will control damaging populations.



And this, our life, exempt from public haunt, finds tongues in trees, books in the running brooks, sermons in stones, and good in everything.

-William Shakespeare

UPDATES FROM THE FIELD...NORTHEAST:

Jean Scott - Northeastern Sales Representative

Record rainfall and below average temperatures have resulted in an increase in disease problems. Anthracnose has been a problem for sycamores, ash, oak, dogwood, horse chestnut and a number of other tree species. Usually the infections stop as the weather warms up and spring rains end, but this year new leaves were infected as they emerged to replace those that had been shed. The high spore load from this year might well result in record levels of infection again next year. Fire Blight was another disease that took advantage of the weather conditions. Trees such as Bradford Pear, which has resistance, were infected as well as susceptible species. The infections continued to spread well into July. Scab diseases and powdery mildew are also very common this year.

The Emerald Ash Borer was identified in Cattaraugus County in western New York. State officials believe the beetles have been there for several years. The beetle has now been identified in Maryland, Virginia, Pennsylvania, Kentucky and West Virginia in addition to the mid-western states.

Asian Long Horned Beetle was found in Massachusetts in 2008. Approximately 4,500 infected trees around the Worcester, Mass area were removed in 2009 and additional 15,000 are being considered for removal due to the high risk of infection.

The cool wet weather slowed the spread of gypsy moth larvae in New Jersey and Pennsylvania this spring. Other insect problems that have been increasing are all types of scale insects, flatheaded borers and Ambrosia beetles.



NEW MYCOJECT FORMULATION ON THE WAY...

The registration process for Mycoject Ultra is moving forward with product chemistry and toxicology studies nearing completion. We expect initial registration from the EPA by the end of this year, or early 2010, with state registration following suit. The way things are shaping up Mycoject Ultra should be available for the spring season!

Ask

Ann: By Ann Hope

Q. How far should I drill into a tree to make sure I get the best uptake?

A. The drilling depth for each tree is different. When you start to drill, you want to keep the drill in the forward motion until you can feel the resistance in the tree. Once you feel the resistance go just a little further (approximately $\frac{1}{4}$ inch), then stop - do not push the drill any further.

As you're pulling the drill out of the injection site, keep it in forward motion so as not to fill the injection site with debris. I will usually go in and out of the injection site a couple of times to clean out the debris. This technique will help make sure you're in the trees at the correct depth and should help with capsules drainage.

Venting/Breaking the capsule's seal prior to placing the capsule onto the tree will also help. If you have any questions about this technique, please feel free to call me at 626-321-2473.

Ann Hope is Mauget's Technical Support Representative for Southern California. Please email any questions to Ann at: ann@mauget.com



FALL APPLICATIONS



Now is the time to start thinking about your fall applications.

*Keep in mind applications need to be made prior to the soil temperatures getting below 45 degrees.

INSECTICIDES:



Abacide 2- for the control of spider mites (pines, conifers). Fall applications with the Abacide 2 are easier to make when the sap flow isn't as heavy as during springtime.



Imicide- as a preventative or curative applications for a broad spectrum of insects

FUNGICIDES:



Arborfos- for the suppression of Anthracnose (Sycamore, Elm and Ash), Fire Blight. Fall applications should be made prior to leaf drop or color change. This will ensure the product is in place prior to the following spring infection period.



Tebuject 16- for use on small trees susceptible to spring leaf disease such as Brown rot on ornamental cherry. Again, these applications should be made prior to leaf drop or color change.

FERTILIZERS:



Inject-a-min Iron/Zinc and Inject-a-min Manganese are both great in providing frost protection and frost damage recovery.

Information:
5435 Peck Road
Arcadia, CA 91006
(800) 873-3779
(626) 444-1057
Fax (626) 444-7414
mauget@mauget.com

Nate Dodds	Ext. 101
Charlie Dodds	Ext. 103
Ann Hope	Ext. 155
Javier Diaz	Ext. 104
Stephanie Monroe	Ext. 100
Saskia van Derveen	Ext. 102
Mary Peters	Ext. 115

TECHNICAL SUPPORT

Ann Hope
(800) TREES - RX Ext. 155
(800) 873 - 3779 Ext. 155

REGIONAL SALES REPS

Jim Rollins (419) 360-1189
Midwest Sales Representative

Jeff Hunter (941) 735-0232
Southern Sales Representative

Jean Scott (410) 430-4108
Northeast Sales Representative

Marianne Waindle (916) 717-3009
Western Sales Representative

Please contact Mary Peters—
Newsletter Editor
(mary@mauget.com) with
suggestions or topics you would
like to see in future issues



QI - 20 UPDATE:



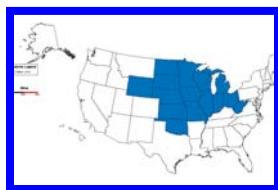
The first round of beta testing of the QI-20 has been completed. The objective of this testing was to use the system under field conditions, by industry professionals, in order to identify strengths and flaws. We then take their findings, and make any necessary adjustments.

With beta tester feedback turned in, we have been evaluating the results. As expected testing highlighted strengths along with weaknesses in the system, and has provided direction for important design adjustments. Currently we are making the necessary changes to the system, and preparing for the next round of beta testing for this fall.



The Flame Tree

UPDATES FROM THE FIELD...



THE MIDWEST:

Jim Rollins - Midwest Sales Representative

Many parts of the Midwest report having a cooler than normal summer. Many areas throughout the Midwest report having one of the coolest months of July ever recorded. This cool summer appears to have delayed the development of some of the insect pests which we generally encounter. Applicators from several areas report that the Japanese Beetle adult emergence was 7-10 days later than normal. Other than showing up a little late, applicators report dealing with the normal insect pest problems.

The Emerald Ash Borer continues to spread throughout the Midwest. EAB has recently been officially identified in Northern Kentucky, Southeastern Missouri, Southern Wisconsin and in the greater Minneapolis area.

Disease pressure appears to be lighter than normal in much of the Midwest. This is most likely due to the lack of high temperatures along with high humidity.

PRODUCTION & MARKETING

BY NATE DODDS—PRESIDENT

The first half of 2009 proved to be the most unusual first half in recent memory. The orders came in at a dramatically reduced volume and orders were placed with much greater frequency. We have been pleased that our business has been at a brisk rate with rare exception throughout the country.

We wish to thank our distribution partners as well as our professional tree care practitioners for their support through these uncertain times.

Production has been fortunate to have been able to fulfill our customers needs in a timely manner. During the first quarter of 2009 we were alerted to a problem associated with cracking lids on product produced in March of 2009. Through investigation we found this to be isolated to a particular batch of material we received from our supplier. We further examined the options we had in formulation and with our suppliers technical staff came up with a solution that further insured against this occurring in the future.

We are excited at the reception our Liquid Loadable Line of products has received and look for some special incentives to entice you into trying these products.

We have more new products going through the registration/testing process and we will be updating you as they get closer to release.

Look for us at GIE+Expo (Booth # 2045) in Louisville in October and the TCI Expo (Booth # 603) in Baltimore in November. Look us up and stop by to say hi should you attend either of these events. We will also be attending regional trade shows and seminars all over the country, check our website for locations and times www.mauget.com.

UPDATES FROM THE FIELD... THE SOUTH



We hear that the drought has been much relieved in parts of the southeast however trees are still showing the effects and will over the next few years. Stemix plus is being used successfully to help overcome their decline.

Lots of pine injections are occurring. Always remember that pines during the warmer periods of the year must be injected in the early morning hours for best uptake and results.

MT. LAGUNA AIR FORCE BUILDINGS TORN DOWN TO PLANT TREES

Federal stimulus money will be used to demolish old buildings that once housed up to 400 Air Force personnel in Mount Laguna so grass and trees can be planted.

The disused 140-acre Laguna Mountain Air Force Base, located about 50 miles east of San Diego, is one of several U.S. Forest Service sites that will be torn down in 14 California counties using \$18.2 million in stimulus funds, *The San Diego Union-Tribune* reported.

Since the base was abandoned by the Air Force in 1981, it has turned into a wasteland of construction debris and gutted graffiti-covered structures.

The Forest Service has wanted to demolish the old buildings for years but hasn't had the money until now, according to the Union-Tribune.

Forest Service officials told the newspaper the transformation will take "a couple of years."

The Laguna Mountain Air Force Base was one of more than 200 air defense and long-range radar facilities that monitored the nation's skies during the Cold War.

It opened in the mid-1940s and was given to the Forest Service when it closed in 1981 to be used for a Youth Conservation Corps camp, but the money to run the camp wasn't available, the Union-Tribune reported.



Untreated Spring Leaf

Start Your Spring Season This Fall

Timing is everything — get a head start on treating spring diseases like Fire Blight and Sycamore Anthracnose with Mauget's ArborFos.

ArborFos has a long carryover that lets you:

- Avoid spring rain delay with fall treatment
- Focus on treatments on your time
- Increase additional fall business
- Free up your spring busy season

Don't delay. Treat with ArborFos now.



The Right Way To Treat A Tree

